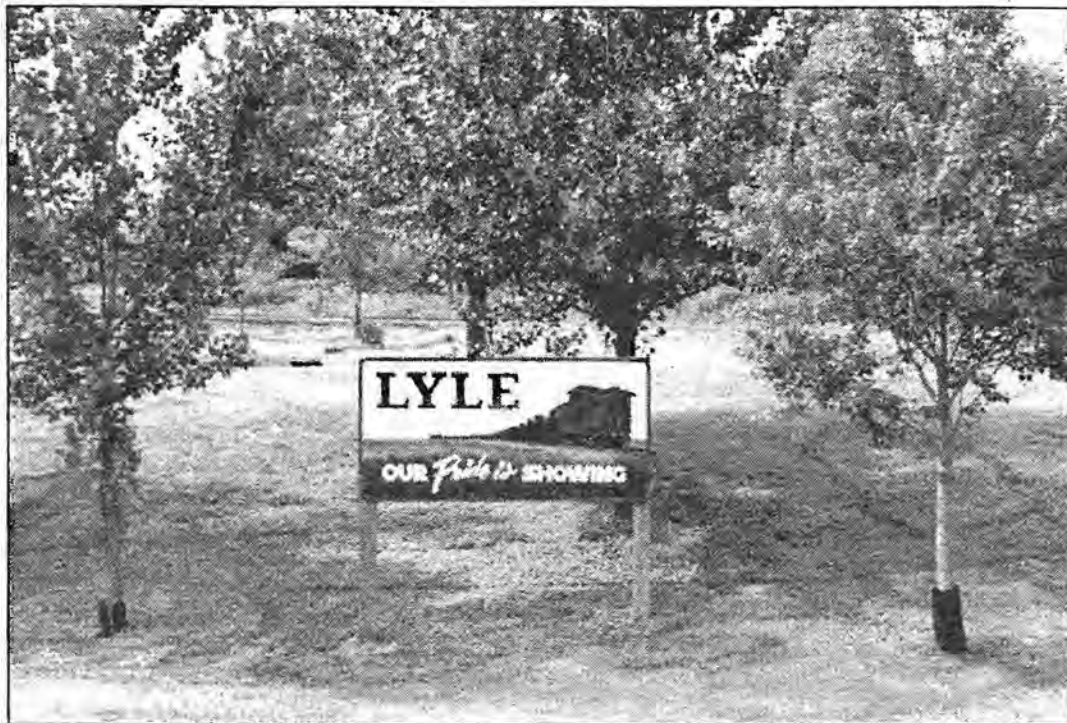


Lyle Celebrates



125

Years

June 30, July 1-2,

1995

We wish to express our appreciation to all those who contributed photos and historical information for this 125th Celebration Commemorative Booklet.

Our purpose was to provide insight into the last twenty five years of progress in the City of Lyle and surrounding area. Lyle has seen many changes in the last 125 years.

Our hope is that through continuing record, some of this information can be preserved for future generations.

125TH COMMITTEE

ACKNOWLEDGMENTS

This 125th History Book of Lyle has been prepared from information gathered by local residents who have brought in scrap books, old photos, news clippings, and other items that were shared.

Thank you to the churches that have supplied histories of the area, and other civic groups for their valued histories.

The 125th Committee is grateful to everyone who helped in any way with the completion of this book.

CITY OF LYLE

The City of Lyle suffered three disasterous fires that destroyed much of the business district. The population began to decline, railroads were abandoned, the rural economy declined, ag-related businesses closed, and commercial buildings were in disrepair. This has proven to be a challenge to the community and the City Council.

1967

The City of Lyle granted an easement to the Lyle School district for the construction of a new addition to the school. The city owned maintainer was proposed to maintain Nevada Township roads. Joseph Construction of Austin was hired to build the bandshelter.

1968

David Young held the position of Mayor. Council members included Taylor, Bell, Wood, and Halverson. Shirll Nelson was the clerk. Kenneth DeBoer was hired as the Justice of the Peace. The water rates were \$2.00 per month.

1969

The Medical Building was selected to be the city hall. The old village hall was used as a warehouse. Lawyer John Krohn maintained an office in the Medical-City Hall one day a week.

1970

Shirll Nelson resigned as city clerk and was replaced by Jerry Reinartz as clerk and John Perkins as his assistant. Charles Ekle was sworn in as mayor, council members remained Taylor, Wood, Halverson, and Bell. A 1970 Skylark was purchased for use as a police car.

1971

After much opposition the city decided not to pave Pine Street. The County Commissioners proposed to form a County Housing Authority to act as agent for the villages. Ernest Schaufenbil was clerk.

1972

Mayor Ekle continued as mayor. Concll members are Ness, Perkins, Taylor and Helgeson. Dorinda Holst was appointed clerk. Ron Attlesey was hired as Municipal Liquor Store Manager. Plan were made for the annexation of the Hansen Addition to the city. The lots were surveyed and plans were made for city water and sewer.

1973

A fire-alerting system was installed by means of a phone bar which alerted the Fire Department when they were needed. The legal drinking age was lower to 18. Dutch Elm disease created havoc in the City. Water and sewer was extended to the Hansen Addition. Charles Berg was appointed as the Civil Defense director and Sheriff officer John LaValley was hired as the Lyle Police officer. director and Sheriff officer John LaValley was hired as the Lyle Police officer.

25 Years Remembered

<http://lyle.mn>

1974

Larry Ness resigned from the council and John Lindberg was appointed to fill the unexpired term. City elections were changed to the first Tuesday after the first Monday in November of even numbered years to concur with the state elections. Terms of the mayor and council are changed. The City of Lyle tried to acquire land for a fire hall and city hall from the Knights of Pythias.

1975

The Lyle Lions Club donated land to the city to be used as a community center. A 1974 Monaco was used as the police car. David Young replaced John Perkins on the council. Curt Wilkinson made plans to set up a ballroom in the Silver Saddle. Elsie Wilson served as city clerk.

1976

Mayor Charles Ekle served as mayor, Helgeson, Lindberg, Taylor, and Young served on the council. Debbie Wilson was city clerk. The City proposed to improve city streets and add storm sewers, and curbs and gutters.

1977

Assessments were levied for the street project. A fourteen unit low-income housing complex, Colonial Manor, was constructed in the city by the Mower County Housing and Redevelopment Authority. County wide approval for 911 was initiated. New playground equipment was installed in the Lyle City Park.

1978

A joint effort was undertaken by the Lyle school, City, and Lions Club to improve the tennis courts at the park. An Arbor Day Proclamation helped reestablish trees in the city and the council entered a joint powers agreement with the county regarding building inspector.

1979

Mayor Helgeson took office in January. Council members were John Lindberg, David Young, Neal Kenyon, and Harold Rohne. Plans were discussed about possible expansion of the Lyle wastewater facility.

1980

A bingo ordinance was passed. Reforestation under the Adopt a Shade Tree program was passed. Deputy City Clerk position was approved with Helen Nelson serving in that office. Linda Hickman was hired as Liquor Store manager.

1981

Mayor Wayne Helgeson was assisted by council members Dorinda Holst, Neal Kenyon, Harold Rohne, and Louis Taylor. Nancy Williamson was hired as city clerk. The well project resolution was passed with water rates being \$14 per quarter. Highway 218 was resurfaced.



1982

The city began discussion with Jones and Haugh for the drilling of the new city well. The Lyle Lioness along with the City erected a Welcome sign on the north edge of Lyle. The city began construction on the new pumphouse. A committee was formed to raise funds for new Christmas decorations. A Citizens Task Force on Police Protection was called for by the citizens. Investigations into various plans were made but none were adopted.

1983

Wayne Helgeson was mayor and the council members were Rohne, Kenyon, Holst, and Taylor. The city continued to drill the new well. The city began to look for new ways to revitalize and renovate Main Street.

1984

Gary Meyer was hired as liquor store manager and Fred Radloff as a part time police officer. A task force was formed to study the Lyle area needs. The first need found was the construction of an emergency services building. The outdated fire hall was in need of major repairs. Volunteer groups held various fund raisers to meet the cost of construction. The community turned out to support events which included wine and cheese tasting, ice cream socials, bike-a-thon paper drives, celebrity auction, dinners, etc. All funds were matched by money from the municipal liquor store. The building was constructed, housing both the fire department and the first responders. This was the first of many events that changed the face of

1985

Lyle received a grant from the Southeastern Minnesota Emergency Services to fund training of a First Responder Squad. The squad was formed and the residents held fund raisers to purchase the most basic medical equipment needed by the squad.

1986

Wayne Helgeson was mayor and the council members were Rohne, Kenyon, Taylor, and Golberg. The Minnesota Planning association awarded the City of Lyle its "Award of Excellence in Planning" award. Abandoned Northwestern railroad property was aquired and resold.



1987

Lyle received its first Small Cities Development Program grant of \$356,433. This funding enabled residential and commercial rehabilitation, demolition of dilapidated buildings, and new sidewalks in the commercial district. The grant did not pay for labor in the construction of the sidewalks, volunteers donated their time needed to accomplish the task. Another grant of \$221,767 from a private source supplemented the original grant.

The Governor's Council on rural development and the Minnesota Project selected Lyle as one of two cities to receive a research grant for a pilot project on agricultural diversification bringing city and farm residents together. From this grant, the Lyle High School Rural Development for Youth program was initiated.

1988

The Lyle 2000 and Lyle Economic Development groups were formed. The EDA acquired land for the Mini Mall. Nancy Williamson was hired as Director of Development and Rehabilitation. Kim Helgeson was hired as clerk. The recycling program was adopted.

1989

Harold Rohne continued as Mayor and council members were Golberg, Taylor, Price, and Weisman.

1990

Lyle received a second Small Cities Development Grant for \$540,140 for housing rehab and wastewater treatment facility wastewater gap funding. Lyle qualified for the EPA and PCA grants to help in funding improvements at the wastewater treatment facility. Mark Hanson was appointed to complete the term of Weisman.

1991

Rohne was mayor, council members were Bauman, Hanson, Golberg, and Taylor. Natural gas was invited into the city. Jake Freese was hired for city maintenance.

1992

Pagers were purchased for the fire department to replace the phone bar system. The Lyle Municipal Liquor Store was sold.

1993

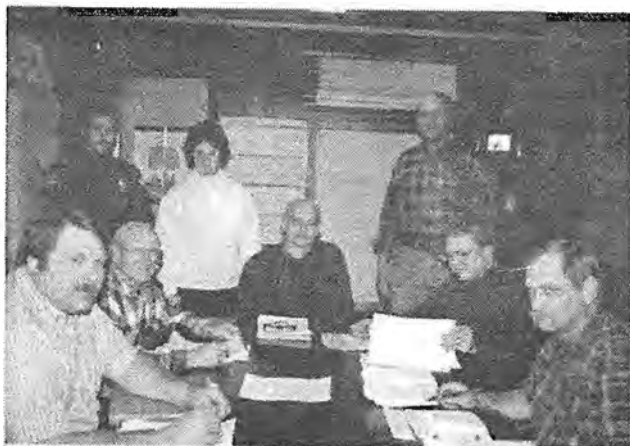
Mayor Rohne was assisted by Taylor, Bauman, Hanson, and Frank as council members. Jeannie Parmenter became the city clerk. A spec home was built and sold. Nancy no longer served the city as Director of Development.

1994

TIF (Tax Increment Financing) was established to encourage business development. A city shop was constructed. The Lyle township building was erected. A four unit townhouse was constructed. The new wastewater system was up and running.

1995

Lyle celebrates 125 years of existence and looks forward to many more years of growing.



LYLE 2000

The Lyle 2000 group, a grassroots organization, was formed in 1988 to meet the needs of revitalization and renovation of the Lyle area. One result was the construction of the Lyle Mini Mall. Off shoots of the Lyle 2000 group result in the community library which started in the city hall and later moved to the Mini Mall.

An ice skating rink was constructed and dirt was hauled in to accomodate a sliding hill on the east side of town.

Funds were raised to purchase an abandoned Milwaukee Railroad caboose and it was moved to Lyle on the north edge of town. Volunteers cleaned and painted it. It serves as an information center and eventually a mini golf course will be built on the site.

Lyle joined the Historic Bluff Country Tourism organization and became the southwest entrance to Historic Bluff country. Saturdays open markets were held during the summer months in the park to boost local the economy. Volunteers worked with the City of Austin, Mower County, and Riceville, Iowa to develop a bike, hiking, or cross country ski trail.

The Festival Committee of the Lyle 2000 group planned a five day event over the Fourth of July in 1990 which included Lyle 2000 group planned a five day event over the Fourth of July in 1990 which included the first ever all school reunion.

Lyle received a Celebrate Minnesota 1990 grant which was matched three to one by donations from local churches, businesses, organization, local school, and individuals to totally renovate the Lyle City Park. A new gazebo band shell was erected by the Lyle High shop students, a sand volleyball court, new restrooms, and horseshoe pits were constructed. Lyle's senior citizens helped paint the play equipment and picnic tables.

The Minnesota Department of Transportation initiated a landscaping project on Highway 218 at the North and South ends of town.

The Lyle Economic Development Authority was formed to help with meeting the needs of business development, retention, and expansion in the area.

As part of the Lyle 2000 plan, a Walk of Pride was constructed in the Lyle Park. Patio blocks were painted and placed in a concrete walkway through the park. The blocks were sold as a fund raising project for the Lyle Economic Development Authority. This project is ongoing. The group spearheaded a fundraising effort to purchase Christmas lights and decorations to be placed around the gazebo, the caboose, and in the park.

The Lyle Economic Development Authority, Lyle 2000, and City combined forces to publish a bi-monthly newspaper which is mailed to all Lyle residents, members of the Lyle school district free of charge, and to subscribers at a fee.

YOUNG TRUCK LINES

Dave and Joyce Young started their business as Young Grain Company in Lyle, MN on February 14, 1958. They started with one unit and hauled grain, mostly within the state of Minnesota. In 1964 they changed their name to Young Truck Lines and broadened their scope of business to 48 states, hauling metal products, machinery, etc. for International Transport of Rochester. By 1981 they had their own authority and were moving their own freight.

They built their present truck garage on Main Street in Lyle, MN in 1966 and their office in 1986.

They have four children. Three sons and a daughter (Victor, Douglas, Jarrod and Michelle). All of the children have been involved in the business in some way over the last 37 years. Douglas has been a part of Young Truck Lines for many years. He and his wife, Joelle are now partners and will be taking over the business in a couple of years. Victor is a Lutheran Pastor, with a church at Spicer, MN. Jarrod after spending 8 years in the Navy is now driving truck for Douglas. Michelle is a teacher at Hayfield, MN.

Dave and Joyce are looking forward to retirement.



LYLE ECONOMIC DEVELOPMENT AUTHORITY

In 1990 the Lyle Economic Development Authority was organized to pursue economic and community development. Other goals of the Lyle EDA include actively promoting and attracting local business. The group works to eliminate blighted lands and to prevent chronic unemployment and to provide adequate housing.

The Lyle EDA was originally formed as a program of the Lyle 2000 group which was headed by Nancy Williamson. The first president was Jane Attlesey.

The organization actively sought Star City status. They were instrumental in the designing of the Lyle Mini-Mall. Plans have been pursued for a bike trail between Austin, the City of Lyle, and Prairie Visions group coming from Rose Creek and Adams and areas further East.

The Lyle EDA is the sponsor of the Lyle Walk of Pride and have handled the promotion of the sales of printed blocks.

The Lyle-Lyte newspaper is published bi-monthly with funding by the EDA and City.

The Lyle EDA combined funding with the Mower County Housing Authority to build a spec-house in 1993. The City of Lyle had a tax-forfeited lot that the new home was built on. The City had a desperate need for new housing and this was one way to try and solve this problem. In 1994 a Townhome project in the city TIF district provided four new housing units. The EDA has been responsible for the planting of the flowers and shrubs at the caboose tourist location.

The Lyle EDA meets on the third Monday of each month at 7:00 P.M. at the Lyle City Hall. Current officers are President Charles Ekle, Secretary Rachel Hudson, and Treasurer Dorothy DeBoer.

The Lyle EDA
 back row- Linda Ellis, Ruth Kuechenmeister, Dorothy DeBoer, Rachel Hudson, and new businessman Rod Kvam. Front Row- Robert Balgeman, Delos Frank, Charles Ekle, and Shirli Nelson. Absent- Harold Rohne, Louis Taylor, Jeanne Parmenter, and Gary Nelson



We're Growing... <http://lyle.mn>

"RED CABOOSE" TOURIST
INFORMATION CENTER

In 1988 the original committee of the Lyle Tourism Group was formed as a branch of the Lyle 2000 group. The tourism objectives were to develop a Lyle area tourism brochure, joined historic Bluff Country and made Lyle the Southwest entrance to Bluff Country. Funds were raised for the purchase of a Milwaukee Railroad Caboose to be used as an attractive and unique tourist information center.

The committee wrote for brochures from all over the state of Minnesota. Charles Berg made a rack to hold all of them. The first home for the Tourist Information Center was in the Community Building on Main Street in Lyle. It was soon decided that this was not going to be satisfactory.

The Milwaukee railroad Company was contacted, and it was found that a caboose could be viewed at a railroad yard in Minneapolis. Nancy Williamson, Katherine Howard, Delores Frank, and Charles Morgan (a retired railroad employee from Austin, Minn) made the trip to Minneapolis to view the caboose.

What a mess, "bums" had been living in it. On July 13, 1992 the caboose was purchased from the Soo Line Railroad for \$1,000.



*LYLE...entrance to Historic Bluff
Country - the Southeast Minnesota/
Mississippi River adventureland
for every season.*

The caboose arrived in Lyle by rail. The railroad company had provided rails for the caboose to sit on. It currently sits along Highway 218 across from the Lyle City Park. Much volunteer help was needed to get the caboose moved to its permanent present location.

The cleaning process began. A grant was received from the Valspar Paint Company for paint for the caboose. Many individuals and groups from the Lyle area donated time and supplies to fix up the caboose. New carpeting was laid, but most of the interior remains the same as it was originally. A second rack was installed for tourism brochures. The Lyle Legion donated a flag and flag pole. A American flag of flowers is planted to the North of the Caboose, flower beds, shrubs and trees surround the caboose.

The grand opening of the caboose was October 10, 1992. A large map of the S.E. Minnesota Historic Bluff Country stands outside the front of the caboose to welcome travelers.

In 1994 a mini-golf course was opened beside the caboose with its main theme being trains.

The Tourism Caboose is open from Memorial Day to Labor Day weather permitting each year.

The current members of the Lyle Tourism committee are Katherine Howard, Delores Frank, Carol Ekle, Carol Rieken, and Elsie Hanson.

LYLE COMMUNITY LIBRARY

The Lyle Community Library started in City Hall with one bookcase unit in 1990. The Library was open the same hours as City Hall. In 1992 it moved to the Cedar Mall and officially opened on June 10, 1992 at 102 Oak Street.

The space for the Library was donated by the Sterling State Bank. Various organizations and individuals contributed funds for furniture and furnishings. Many of the books were donated by the Rochester Public Library and local individuals.

Members of the Lyle 2000 Library Committee spent many hours cataloging the books. There are childrens books, Historical, Novels, romance, Western, Biography, Sports, Religion, Mystery, Crafts, cookbooks, nature and classical books.

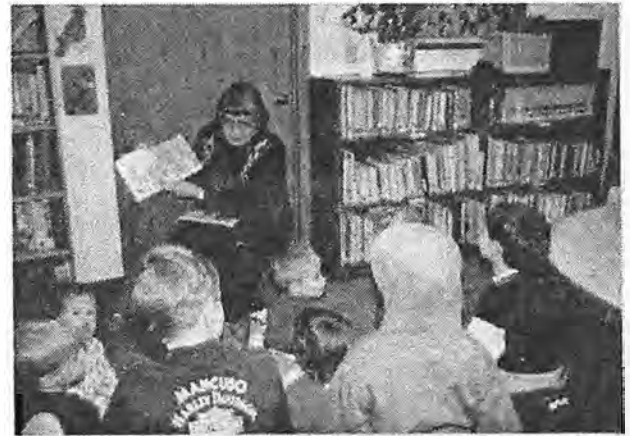
Gladys Olson was the first Librarian hired in June of 1992. In June of 1994 Dorothy Bartholomew took over as librarian. Every Thursday morning story time is conducted for the young children by Lola Howard. There are stories, crafts, games, and sing alongs. On Thursday and Friday afternoons the library is run by volunteers.



LYLE LIBRARY STORY TIME

The Lyle Library Committee began meeting in October of 1990 at the Lyle Community Center. Norma Nelson was the first Library director. As interest in the library grew they were able to move to the City Hall and be open the same

hours as City Hall. The volume of donated books continued to grow and soon had out grown City Hall. In 1991 the Library moved to the Cedar Mall where it remains today. The library is open from Monday thru Friday. Story Hour is conducted every Thursday morning from 10:00 A.M. to 11:00 A.M. by Lola Howard. Books are read, crafts done, and some games are played. Story time is open to any preschooler.



LYLE FIRST RESPONDER SQUAD

In 1985 the City of Lyle received a grant from the South Eastern Minnesota Emergency Medical Services organization in Rochester to fund the training for fourteen individuals to be trained as First Responders. Prior to that time, the residents of Lyle had to rely on ambulance service from either Austin or Osage to respond to Lyle at the time of an emergency. With the

blessing of the Lyle City Council these fourteen dedicated individuals completed their training and were licensed as First Responders. The Lyle School had donated a station wagon to the City of Lyle which was used as the first emergency vehicle. Oxygen and basic supplies were purchased from fund raising benefits that the squad conducted. The first board of directors included President Jeanne Farmenter, Vice President Don Wendorf, Secretary Gene Block, and Treasurer Karen Frank. The purpose the First Responder Squad is to provide emergency health care until the time an ambulance can arrive to transport the victim. Over the course of the years many more training sessions have been conducted and new members trained as some have moved from the area or resigned. Over the course of the years the squad has responded in a station wagon, a van, and currently is using modified ambulances that the squad has purchased from Austin Ambulance.



A phone bar was installed in 1985 to enable residents or the Mower County LEC to dispatch the First Responders when needed. Over the course of the years a pager system has been installed as well as radio communications.

The Squad continues to have its annual Palm Sunday breakfast as a fund raiser for training and equipment funds.

The Lyle First Responders do not charge for their services, but must rely on donations and fund raisers.

Over the course of the years, some of the First Responders have upgraded their skills to the level of Emergency Medical Technician. The squad is now trained in the use of a defibrillator, extrication equipment, and a full range of emergency medical equipment. The squad continues to upgrade their training at meetings which are held once a month. The squad currently has nineteen members, with an additional four members on the London First Responder Squad.

The 1995 Board of directors includes President Mark Haugland, Vice President John Fossey, Secretary Lynette Aanonson, and Treasurer Dawn Helgeson.



NELSONS TEXACO FOOD MART

Nelsons Texaco Food Mart first opened in 1990. It is located along busy Highway 218. It serves as a gas station and convenience store. There are always fresh baked rolls and hot pizza. The store is open seven days a week and employees six people. This business is owned and operated by Lorimor and Sandy Nelson.



The Lyle Township Hall was constructed in 1994 and is located at 108 Oak Street. The building is used to house the township road equipment and as a meeting place for the monthly meetings.



NEVADA TOWNSHIP HALL

Formerly known as the Nelson School, the one-room school is located just North of Mower County Highway 6, approx. 5 miles East of Highway 218. The old hand pump that was used by the children is still there even though the scene has gone through many changes.

For many years the Nevada Township meetings were held at the schoolhouse. With no maintenance or upkeep, the structure was in extremely poor condition.

At the annual meeting in March, 1988, the subject of renovation was discussed. No conclusion could be established, so a later special election was held. More than 90 residents came to the meeting, voting a consensus of over 85% to restore the building to a useable meeting and voting public building. Using volunteers in the building process, Ruth Kuechenmeister and Ella Marie Lausen co-chaired the project.

During the summer of 1988 renovation began including a ramp for the disabled, outside sanitary facilities, permanent siding, new windows, and the bell tower.

Members of the Nevada Township Board at the time were Delos Frank, John Fossey, Leland Aanonson, Carlton Reuter and David Olson. In 1989 a grant from the Southeast Minnesota Initiative Fund of \$1000 was secured for the purpose of lawn seed, bushes and trees. Planting was done by Troms Nursery, Delos Frank and Ruth Kuechenmeister.

LYLE LUMBER

The Lyle Lumber was started in 1975 on the Ronald Haugland farm. The buildings that had been used to house feeder cattle and later sheep were changed to be used for lumber storage. In the early years the major sales were for pole barn type construction. That has given way to new homes and remodeling work.

The Lyle Lumber has been very fortunate to be able to hire full time summer help who have been honor graduates from Lyle High School.

In 1995 the Lumber Yard was sold to Bryce Haugland and Dawn Block. They will continue operating the business from the same location, one mile east of the water tower on Pine Street. The Lyle Lumber currently has ten well known local contractors work out of the yard.

Ron and Lois Haugland have been long time Lyle area residents. Bryce and Cathie Haugland have three children, two girls and a boy, and live just west of Lyle. Gene and Dawn Block have twin sons and live just east of the City of Lyle. Dawn and Gene Block continue to be bus drivers for the Lyle School District.



Dawn Block and brother Bryce Haugland at their Lyle Lumber, Inc.

LYLE FRATERNAL BRANCH AAL

The Lyle Fraternal Branch of AAL #5583 was organized November 29, 1981 with a dinner meeting at Our Saviors Lutheran Church, Lyle Minnesota. Officers elected were: Virginia Rohne, president, David Anderson, Vice-President, Elaine Martell, Secretary, and Judith Ransom, Treasurer.

Activities include painting the Lyle Park, Clothing donation to the Fairbault State Hospital, gifts to local churches for Sunday School, painting school playground equipment, fundraising for the new fire hall, cupboards for Our Saviors Library, Mona Church insulation, confirmant recognition with crosses, and helping with the Lyle caboose and flower beds.

Benefits were held for Rhonda Baldner, Denise Tieman, Lyle Fire Department, Lyle First Responders, Randy Krulish, Pat Johnson, and Leo Fossey.

Some of the other officers who have served the Lyle AAL include Marvin Rieken, Tom Lubovich, Hazel Baldner, Roberta Howard, David Olson, Kathy Behnke, Gladys Hanson, and Cynthia Hanson.

The current officers are President Dorothy DeBoer, Vice President Ruby Alphs, Secretary Carol Williams, and Treasurer Carol Rieken.



SIX MILE GROVE

In 1984 Six Mile Grove Lutheran Church celebrated its 125th anniversary. The church has a rich history of Norwegian heritage. The name of the church was derived from the stretch of land along Otter Creek.

The summer of 1972 was the beginning of the Outdoor Drive-In Services, sponsored by sister churches of Mona and Six Mile Grove which are held at the Mona Church each summer Sunday evening. The "Come as you are, and sit in your car" idea originated with Rev. Unseth.

Construction of a 30' x 28' front addition began in 1973 and was dedicated in 1974. An outdoor bulletin board and historical plaque were given by memorials. In 1976 a lighted cross, which hangs over the altar, was given as a memorial. The steeple and bell tower was rebuilt in 1987. The church has been renovated, and airconditioned. A new sound system was installed by Virgil Slinde Sr. and Virgil Slinde II with donations from various memorials.

The Six Mile Grove Cemetery holds much of the early history of the area. The Cemetery Association has a perpetual fund used for the upkeep and perpetuation of the cemetery. Memorial Day Services at the cemetery are followed by a lunch with the funds going for that purpose. In 1977 the two brick pillars in front of the church were replaced through memorial donations. A plaque was given by Mr. and Mrs. Chris Olson in honor of all the Veterans buried in the cemetery. The names of the veterans are engraved on the plaque. The dedication was held Memorial Day 1983.

In 1976 a replica of Six Mile Grove was built by Glen Aanonson and his sons, Leland and Larry. The replica is 13' long and 13' high. The replica is on display at the Mower County Fair Ground.



Six Mile Grove Council
1-r Carol Rector, Barb Nelson,
Phyllis Helle, Gladys Olson,
Rev. Russ Wangen. 2-r Dawn
Helgeson, Dave Anderson, Tim
Ehret, Wayne Skov, and Larry
Helgeson.

HELEN VELONIS MINISTRIES



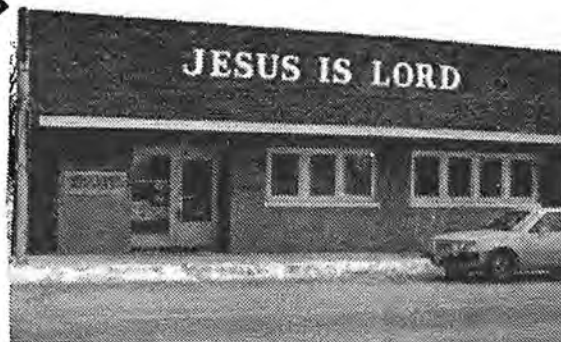
The Helen Velonis Ministries, Inc. held their grand opening in April of 1985. It was a miracle how the Lord put everything together.

The building had been a supermarket before the church purchased it. Before that it had been occupied by many establishments, including a car dealership and repair service. Since the church purchased the building, the inside has been remodeled to accommodate monthly worship services, a fellowship hall, a sound room where tapes are produced, and the offices for the ministry.

There are many people involved in this ministry, pastor Helen, her assistant Linda, and many workers and helpers from Lyle and surrounding areas. Internationally, there are missionaries in Haiti, Ghana (West Africa), and the Philippines which are part of the ministry taking care of orphanages and schools in those countries.

In 1992 the building to the south of the ministry was purchased to house the "Servants School Of Ministry". The school teaches and helps prepare the students to witness to others about Jesus Christ. Also housed in this building are clothing and supplies for the needy, which are distributed in person or through the mail. This ministry reaches many people, in America and in other countries.

The ministry sends taped messages all over the world. They are used to teach others about our Lord and Savior. Hundreds of Bibles and tracts are distributed each year, as Pastor Helen travels and through the mail, - To reach the lost at any cost.



A newsletter is published every 2 months and sent to over 5,000 subscribers. Pastor Helen has written a book, "Jesus the Life Builder", which has been a blessing to all those who have read it.

Pastor Helen Velonis-Campbell and her husband Roger, live in Lyle, Minnesota. They have three daughters, Venus Velonis in San Diego, Ca; Mary Steinbrink, in Lyle, MN; and Anna Gunion in St. Cloud, Mn., and 8 grandchildren. To God be the Glory!!

QUEEN OF PEACE

In 1946 Queen of Peace Church in Lyle was established as a Mission of Queen of Angels Church in Austin under the direction of Monsignor Donald Cunningham. The first services were held in the hall above the John Hanson General Store where the Mini-Mall is now located. There were about 25 families at that time.

Later in 1946 the small brick building across from the City Hall was purchased, renovated and became the permanent church. The fire station now occupies that location. The congregation grew and within a few years a new church was built. In 1965 the present church was built. Father Tighe, now deceased, served as priest at the time and remained with the congregation for 10 years. The church was no longer a mission but an independent parish. The church now serves about 60 families.

For many years the Catholic Sisters came from Austin to teach religion classes. They are now taught by the church lay teachers. The Rosary Society of Catholic women is very active. They were organized before the Mission was established and continues many activities for the Church, missionary work, and contributions. Father Ruben Spinler now serves as Pastor.



OUR SAVIORS LUTHERAN CHURCH

Pastor Harold Luecke continues to be the minister at our Saviors Lutheran Church in Lyle. In May of 1977 the church celebrated the dedication of the bell. January 1985 was the date of the burning of the mortgage at the church. In September 1986 the members celebrated the 75th anniversary of the church.



OUR SAVIORS COUNCIL

Seated Donna Benseid and Marlene Farlinger. Second Row Steve Follmuth, Larry Murphy, Rick Jacobson, Scott Ulland, Lowell Franzen, and Earl Farlinger. Third Row- Curt Farlinger, Anders Knudson, Jerry Ransom, Roger Nelson, Rev. Harold Luecke. Missing are Travid Haakenson and Sandy Murphy.



WOODBURY CEMETERY

Three miles west of Lyle on Highway 105 lies the Woodbury Cemetery. This cemetery was established in 1855 by J.D. Woodbury. He settled in this

area in 1883 on the bank of the Red Cedar River. The cemetery, Woodbury Creek, and Woodbury School District #13 were named after him. He sold out and moved to Olmsted County in 1855.

The Woodbury Cemetery Board consists of nine members of which three are elected each year at the annual meeting held on the second Thursday in June with a Noon pot luck dinner. On March 10, 1986 the board agreed to buy two acre of land bordering on the north side of the cemetery from LaVerne and Velma Jean Roberts. As of this time, no development of this area had started.

There is a monument dedicated to the Spanish American, Civil, World War I and II veterans. A new shelter enclosing a cemetery map, flower boxes, and benches were dedicated in on May 27, 1991, at the Memorial Day Services. This was built by Justin Tieman of Lyle. At that time, Katherine Howard, in behalf of the Woodbury Willing Workers, the ladies auxiliary presented a check to the cemetery board to be used towards payment on the new shelter. In June of 1992 the Lyle American Legion donated 14 flags to the cemetery for an Avenue of Flags which have been placed at the Main entrance to the cemetery on Memorial Day.

The present officers are the cemetery on Memorial Day.

The present officers are President Roger Campbell, Vice President Louis Taylor, Secretary Katherine Howard, Treasurer Eloise Foss, Actuary David Howard, Board Members Wm. Bell, Donald Barnes, Wayne Hotson and Donald Whalen.

WOODBURY WILLING WORKERS

The ladies Auxiliary to the Woodbury Cemetery Association was organized on June 24, 1909. The first officers were as follows: President Mrs. W.E. Kilgore, Vice President Mrs. W. Ames, Secretary Mrs. P.C. Wilder, Treasurer Mrs. B.A. Bisbee. The organization met once a month and paid ten cents per member present or not. This money was to be used for improvements of the cemetery. There were thirty six members the first year. In May 1910 the Society made a motion to each donate a penny at each meeting for a flower fund. It was also decided to use the name Willing Workers of Woodbury or the Three W's.

In May 1915 it was decided to buy flowers to decorate the cemetery. The WWW paid for work done at the cemetery during the early years. In 1926 it was decided to hold a meeting on the third Wednesday of each month. In 1928 the Society was requested by G.A.R. ladies to check on all soldiers graves at the cemetery so stands and flags could be placed on them. It was also voted to hold meetings from April thru November.

In July of 1937, the W.W.W. bought four iron benches to be placed in the cemetery. In 1941 the groups for entertaining were started.

The Woodbury Willing Workers today plant flowers in the urns and pay for the watering of the flowers in the cemetery. There are currently 56 members. The 1995 officers are President Katherine Howard, Vice President Bea Taylor, Secretary Mrs. Velmajean Roberts, and Treasurer Elsie Hanson. The group meets on the third Wednesday of the months from April thru October with the exception of June which is the annual meeting.



LYLE LEGION POST 105

The original Lyle Legion Post 335 was organized under a temporary charter November 6, 1919, prior to the First National Convention in held in Minneapolis November 11, 1919. The organization however was not active due in part to the depression. It was reorganized on May 19, 1932 as Lyle Legion Post 105. In 1957 the meeting rooms of the present Legion Club were constructed and in 1970 an addition was built to this structure.

The first meetings of the club were held at the Blacksmith Shop and later the First National Bank Building and at the Blakestad building until it burned. Meetings were then held at Hanson Hall and the KP Hall.

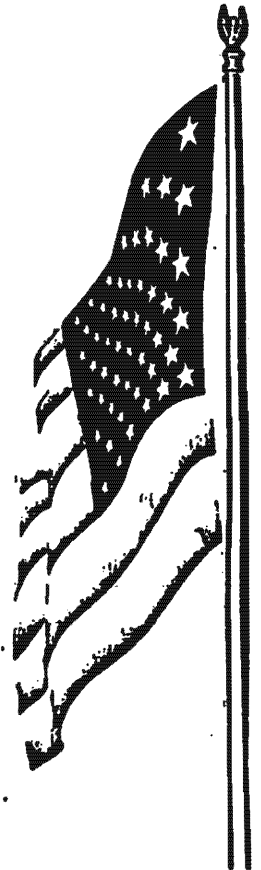
The names of the Charter Members are listed as Russell O. Anderson, Charlie Peterson, Gerard O. Peterson, Oscar Strand, Arthur B. Dahl, Joseph Swenson, Clarence A. Hanson, Chriss M. Oswald, Lewis B. Sola, Willis F. Sherman, Gunther Storaasli, Nels Mark Sorenson, Theo L. Johnson, Chris E. Olson, Caius J. Anderson, Gilbert O. Carlson, Clarence E. Nelson, Dorwin Johnson, Edwin O. Christianson, Alf O. Fossey, Palmer C. Johnson, Alfred E. Jahr, Arnauld M. Jorgenson, Alphanso G. Murphy, Henry M. Lunde, Robert Anderson, Pete Baloff, Arthur T. Fortun, Alvin W. Erickson, Thomas A. Holt, Charley Fossey, Arthur Medinnes, Victor N. Anderson, Gustav Erneron, Arthur Ashley, Herman E. Denison, Oscar G. Larson, Thorman C. Torgeson, Louie O. Torgeson, and Rudolph A. Carlson.

Early records of the Lyle Legion were destroyed. Those who have served as Commanders are listed as follows:

1931-32 Melvin Peterson
 1932-33 Chester A. Riestad
 1933-34 Arthur Ashley
 1934-35 Robert VanHorik
 1935-36 Lardon Halverson
 1936-37 Ibert Hofland
 1937-38 Frank Bedford
 1938-39 Wilfred Murphy
 1939-40 Orvil Pembrouk
 1940-41 Frank Bedford
 1941-42-43 Willis Sherman
 1943-44-45 Ed Eye
 1945-46 Alvin Myhre
 1946-47-48 Robert Berg

1948-49 Marion M. Schmidt
 1949-50 Alvin Myhre
 1950-51 Frank Bedford
 1951-52 Wilfred Murphy
 1952-53 Delmer Helfritz
 1953-54 Lloyd Hegerud
 1954-55-56 Vernon L. Murphy
 1956-57 LaVern Taylor
 1957-58 Charles Drenth
 1958-59 Duane Elvrum
 1959-60 LaVern Taylor
 1960-61 Loren Denisen
 1961-62 Wilfred Murphy
 1962-63 Carroll Hofland
 1963-64 Vernon Nelson
 1964-65 Ben Ahrendt
 1964-65 Gene DeLaney
 1965-66 Warren Austinson
 1966-67 C.J. Gislason
 1967-68-69 Ronald Halverson
 1969-70-71 Galen Holst
 1971-72 Richard Carroll
 1972-73 Robert Raueri
 1973-74 Richard Carroll
 1974-75 John Lindberg
 1975-76 Everett Johnson
 1976-77 James Smith
 1977-78 Galen Holst
 1979-79 Richard Carroll
 1980-81 Tom McLaughlin
 1981-82 Charles Stark
 1982-83 Charles Drenth
 1983-84-85 Everett Johnson
 1985-86-87 James Smith
 1987-88-89 Kenneth Mudra
 1989-90 Kermit Leidall
 1990-91 Gary Harrison
 1991-92-93 Sylvan Faas
 1993-94-95 Galen Holst

Present officers of the Post include Galen Holst, Commander; Bernie Nelson, Vice Commander; Gary Nelson, 2nd Vice Commander; Loren Denisen, Adjutant and Service Officer; William Harmon, Finance Officer; Kenneth Mudra, Sgt. at Arms; Chet Nelson, Chaplin. The Club holds meetings Service Officer; William Harmon, Finance Officer; Kenneth Mudra, Sgt. at Arms; Chet Nelson, Chaplin. The Club holds meetings the second Monday of every month and has been an active supporter of the community. They are the sponsors of the Boy Scouts and Cub Scouts and have funded many of the youth programs in the area as well as giving sizable sums of money to various community causes.





Annually on Memorial Day the Legionnaires present Memorial Services at the Cedar City, London, Deer Creek, Woodbury, Mona, and Six-Mile Grove Cemeteries. A Parade of Flags has been placed at all these cemeteries by the Legion.

The following Lyle Legion Members have served a term as County and District Officers:

Pete Godfredson, District Vice Commander; C. J. Gislason as a District Officer and Galen Holst, County Commander.

AMERICAN LEGION AUXILIARY

The Lyle American Legion Auxiliary Unit 105 was organized March 12, 1934, during a joint meeting with the Legion. J.L. Jennings of Austin gave the address for the evening and Mrs. Vogsted, District Auxiliary President met with the women to organize the Auxiliary Unit. The first officers of the Unit were Mrs. Lewis Sola, president; Mrs. Arthur Fortun, secretary; Mrs. Theo Johnson, treasurer; Mrs. Victor Volstad, Historian.

The Charter Members of the organization were Mrs. Lewis Sola, President; Mrs. Melvin Peterson, Secretary; Mrs. Theodore Johnson, Treasurer, Mrs. Arthur Ashley, Mrs. Grant Berg, Miss Blanche Bedford, Mrs. Frank Bedford, Mrs. Gilbert Carlson, Mrs. Rudolph Carlson, Mrs. Archie Campbell, Mrs. William Everson, Mrs. Arthur Fortun, Miss Myrtle Fortun, Mrs. Charles Fossey, Miss Lulu Gundersen, Mrs. Larden Halverson, Mrs. Iver Hofland, Mrs. Ibert Hofland, Mrs. Adolph Jahr, Mrs. D.W. Johnson, Mrs. O.A. Langhough, Mrs. Wilfred Murphy, Mrs. Chris Olswald, Mrs. John Paulson, Mrs. Frank Peterman, Mrs. Orville Pembroke, Mrs. Nels Sorenson, Miss Ruby Springer, Mrs. Walter Sherman, Miss Clyll Sorenson, Mrs. Victor Volstad.

During WW II the Auxiliary was in charge of the draft registration for the Lyle area.

Those who have served as president are as follows:

1934-35 Mrs. Lewis B. Sola

1935-36 Mrs. Frank Bedford

follows:

1934-35 Mrs. Lewis B. Sola

1935-36 Mrs. Frank Bedford

1936-37 Mrs. O.G. Blakestad

1937-37 Mrs. Ed Zimmerman

1938-39 Mrs. Victor Volstad

1939-40 Mrs. Theo L. Johnson

1940-41 Mrs. Wilfred Murphy

1941-42 Mrs. John Johnson

1942-43 Mrs. Will Everson

1943-44 Mrs. Ed Eye

1941-42 Mrs. John Johnson

1943-44 Mrs. Will Everson

1944-45-46 Mrs. John Johansson

1946-47 Mrs. Ed Eye

1947-48 Mrs. Leo Bumgartle

1949-50 Mrs. Jean Fortun

1951-52-53 Mrs. George Peterman

1954-55-56-57 Mrs. Vernon Murphy

1957-58-59 Mrs. Arthur Rohne

1959-60 Mrs. Marion Schmidt

1960-61 Mrs. Jens Block

1961-62 Mrs. George Peterman

1962-63 Mrs. Milfred Carroll

1963-64-65 Mrs. Arthur Fortun

1965-66 Mrs. George Peterman

1966-67-68 Mrs. Peter Godfredson

1968-69-70 Mrs. Galen Holst

1970-71 Mrs. Peter Godfredson

1971-72 Mrs. Richard Wylie

1972-73-74 Mrs. Robert Rauen

1974-75 Mrs. Richard Carroll

1975-76-77 Mrs. Walter Hall

1977-78 Mrs. Reuben Murphy

1978-79 Mrs. James Smith

1979-80 Sharon Murphy

1980-81 Carol Rauen

1981-82 June Johnson

1982-83 Nura Mattick

1983-84 June Johnson

1984-85 Carol Rauen

1885-86 Karen Farnsworth

1986-87-88-89 Marge Mudra

1989-90 Carol Rauen

1990-91 June Johnson

1991-92-93-94 Karen Farnsworth

1994-95 Carol Rauen

The present officers are Carol Rauen, President; Karen Farnsworth, 1st Vice President and Secretary; Denise Renells, 2nd Vice President; June Johnson, Treasurer; Virginia Faas, Sgt. at Arms; Marge Mudra, Chaplin and Historian.

The Unit has given a \$200 scholarship to a deserving child or grandchild of a veteran since 1972. We originated the foral flag at

The Unit has given a \$200 scholarship to a deserving child or grandchild of a veteran since 1972. We originated the foral flag at the north end of town and annually purchase the flowers for the project. Along with the Legion we honor our Educator during American Education Week. Annually we give fruit baskets to the elderly and handicapped of our area and send holiday greeting to our

area servicemen and women at Christmas. We fund the poppy program, children and youth, Veterans Affairs, legislation on behalf of the Veteran, Americanism, Education, Girls State, County Days, and community service. We also serve as funeral escorts for deceased members upon the request of the family. This is the 75th year of the National Organization of the American Legion Auxiliary whose motto is "Service Not Self."

The following members have served as District and County Officers: Carol Rauen County and District President; Dorinda Holst, District Executive Board; Betty Godfredson, County President; Louise Hall, District Secretary; Marion Smith, District Treasurer. Our organization has earned many awards during their years both on a District and State level. This can be credited to the dedicated members of our organization. The Unit meets on the second Tuesday of the month. There are Junior Memberships for those under the age of 18.

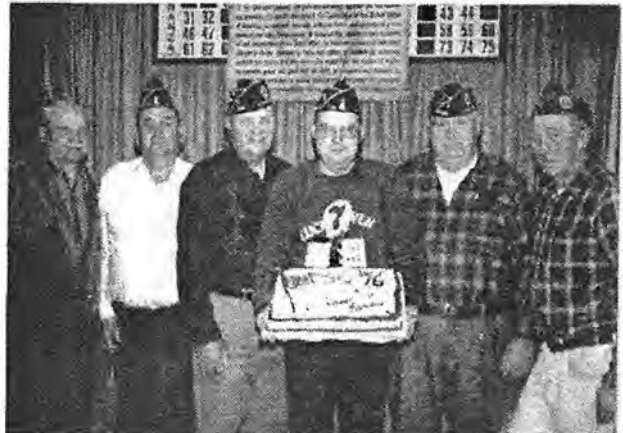


Lyle Legion Auxiliary Officers:
June Johnson, Virginia Faas,
Carol Rauen, and Karen
Farnsworth.

Sons of The American Legion

The Sons of the American Legion are organized under the Post. They are the sons and grandsons of Legion Members. The Lyle branch was organized in 1991. The Charter Members are Timothy E. Carroll, Daniel C. Gregg, Todd A. Harrison, Dennis W. Helgeson, Scott D. Holst, Steven G. Holst, Tony A. Mudra, Laverne Leidall, Robert J. Bonacci, Anthony D. Bonacci. At present the meetings are held the 1st Tuesday of the month. This is the first year the group has been active.

Officers are David Olson, Commander; Vice Presidents Ron Lee and Paul Smith, Adjutant; William (Bill) Smith; Finance Officer Jeff Pederson, Membership, Scott Holst; Russ Slowinski, Chaplin; Trent Murphy, Judge Advocate; Jeff Retterath, Historian; Paul Smith, Sgt. at Arms.



Lyle Legion Post 105 1995
Officers: Chet Nelson, Ken
Mudra, Loren Denisen, Stuart
Skoy, Sylvan Faas, and Galen
Holst.



Organizations

Focus on Youth

DRUG ABUSE RESISTANCE EDUCATION

Each year the DARE program is conducted in the Lyle school system. Pictured below are Rocky Schammel, DARE instructor, Steve Baumann, school teacher and Lyle Councilman, Sheriff Wayne Goodnature, and Mayor Harold Rohne.



LYLE BOY SCOUTS, CUB SCOUTS

Yvonne Maly is the Lyle Cubmaster and Jerry Sampson is the Lyle Boy Scout Leader. The Lyle troops continues to be active in the Pinewood Derby Contest and cake decorating contest along with other activities during the year. Pictured are Back row: Chris Maly, Eric Kline, Jim Krulish, Steve Sampson, Jerry Sampson and Yvonne Maly. Center row: Shawn Harmon, Chase Douglas, Nels Nelson, Greg Mattick, Brian Helle, Alex Halbach. Fron row: Kyle Fett, Jashua Baumann, Alex Kline, Nick Ehret, and Matt Maly.



LYLE GIRL SCOUTS AND BROWNIES

The Lyle Girl Scouts and Brownies meet at a regular basis at the Lyle School. This group of young ladies is active in community improvement projects. This years leaders are Blanche Hollerud and Tracey Crews.

Back row-Tracey Crews and Blanche Hollerud Third Row, Stephanie Hollerud, Laura Wiedmann, Heidi Benson, Jamie Crews. Second Row- Beth Lynch, Amy Crews, Emily Kilgore, Kendyl Pelovsky, Katie Vogel, Kristina Hollerud. Front row- Autumn Jacobson, Lindsay Halbach, Krisla Balgeman, Stephanie Hermann. Absent Angie Carroll and Sara Wiechmann



LYLE PRE-SCHOOL

The program was started in 1971 at the Lyle school. This program is for children who are not enrolled yet in kindergarten. The first teacher for the program was Penny Myhre. She held the position from 1971 through 1984. Her aids were Martha Fister from 1971 to 1974, and Sandy Murphy from 1975 to 1984.

Jo Condon was the teacher for part of 1984. Terry Hulshizer replaced her as teacher and

Florence Golberg was the aid. From 1987 to 1994 Sandy Murphy was the teacher. Aids included Sherri Ulland, Mary Baumann, Tammi Fett, Peggy Hanson and Sue Murphy. In January of 1995 Tammi Fett was appointed as teacher with Teresa Slowinski being the aid. The current board members of the Lyle pre-school are Renee Henaman, Joelle Young, Tammi Fett, Teresa Slowinski, Rose Farrel, Deanne Silbaugh, and Jenny Orth.



Lyle Community Education Committee Members: 1-r, Delos Frank, Paul Trelstad, Steve Baumann, 2-r, Linda Ellis, Bonnie Feine, Diane Klouse, and David Dahlquist. Absent members Lavern Leidall, Viola Anderson, and Charles Turckenmiller.

TEACHER OR EDUCATOR OF THE YEAR

Lyle School District

1974	Maureen Goetsch
1975	Mrs Edna Morgan
1976	Rachel Hudson
1977	Mr Lonnie Smith
1978	Mrs Adeline Longworth
1979	Mr David Dahlquist
1980	Mrs Fran Fatterson
1981	Mrs Carol Williams
1982	Mrs Dorinda Holst & Randy Krulish
1983	Mr Steve Baumann
1984	Mr Robert Shaw
1985	Mrs Barb Ferry
1986	Mr Charles Weisman
1987	Mrs Doris Kelley
1988	Mr Paul Trelstad
1989	Mrs Martha Fister
1990	Ms Louann Senne
1991	Mrs Donna Henaman
1992	Mrs Lola Denisen
1993	Mrs Sue Roberts
1994	Mr Steve Klemetson



Lyle School Board:
1-r, Darwin Small, Gene Fell, chairman, Todd Cooling. 2-r, Jeanne Price, Mark Schneider, Wendy Kunze, and Paul Trelstad.



J & R RANSOM TRUCKING, INC.

Jerry and Roberta Ransom opened their business in 1978, operating out of their home at Rural Rose Creek. Over the course of the years the business has changed from being strictly grain haulers to being more diversified. Today fertilizer, feed ingredients, liquid fertilizer, finished products, and bedding materials are being trucked as needed.

Jerry and Roberta Ransom are both life-long residents of the Lyle area. They both graduated from Lyle High School and are also engaged in farming. The Ransoms have three children, Erin, Kristen, and Cory. All three children are currently enrolled in the Lyle School.

D & D MARKET

Darlene and Darcy Strouf purchased the Quality Market from Jim Baldus on October 1, 1994. The store is located at 104 Grove Street. Some of the previous owners of the business were Ernie and Erna Schaufenbil, Mike and Brenda Felton, Dan and Jodi Gregg, and Jim Baldus. At one time the Lyle Grocery was in the building on Hwy 218 where the Velonis Ministries is currently located.

Small town grocery stores have seen many changes over the course of the years, including the D & D Market. The grocery line has gradually changed from a full service grocer to more convenience type items. More items are geared to families where both parents work.

Darcy and Darlene Strouf have enjoyed living in a small town and raising a family here. Their hopes are to continue serving the small community and staying up to date with new products. The Stroufs have four children. Brant and Brian are both graduates of Lyle High School. Jarod and Mamie continue to be students at the Lyle School.

LONDON 4-H CLUB

The London 4-H Club has been active in the London and Lyle Township area since the 1920's. Presently there are 26 active members from 15 families. Some of these members are second generation families.

The majority of the members still show animals and have many gardening type projects.

4-H has expanded to include a variety of projects to include as many members as possible. The London Club is very active in contests sponsored by the County, for example communications contest, food review, share-the-fun, and record judging. 4-H also offers a lot of training to teach members interviewing skills and leadership skills, things the London 4-H members take advantage of. The London 4-H stays active in the local communities doing community pride projects such as road-side clean up, cleaning the Lyle Park, having a float in the 4th of July parade, and serving auction sale lunches.

The present leaders are Tony and Denice Mudra with Lois and Dennis Gordon assisting. Most parents take a turn at being key leaders as their own children get older.

The London 4-H would like to thank the London and Lyle Communities for their interest and support over the last 70 years. They hope to continue their activities for many years to come. "Lets try for three generations!"



WOOD PECKER PRODUCTS

Rod Kvam opened his business of Wood Pecker Products in December of 1974. He purchased the old Silver Saddle building from Randy Duholm. The Duholms had used the building for storage purposes. In 1970 Burghard Produce occupied this building with Loren Denisen as manager. Curt Wilkinson purchased the building in 1976 and installed booths and used the building as a dance hall. In 1978 this building was purchased by Don and Barb Olson and Bob and Betty Fisher and was named the Silver Saddle. Betty Fisher also operated a beauty shop in the building. There was a dance every weekend and some Sunday afternoons. The building was used for many wedding dances. The Lyle Cancer Telethon originated in the Silver Saddle building.

Wood Pecker products manufactures bird feeders and bird feed. They currently employ three individuals.



BOB'S ELECTRONICS

Robert Nelson opened his business in 1962 at his home at 208 Grove Street in Lyle. Robert and Helen Nelson are both active in the business. The business is always updating to keep up with the technology of the TV and VCR industry. Bob and Helen Nelson moved to their home at 208 Grove Street in December of 1956. They have two grown children. Deb and her family live in Mantorville, Joel and his family live in Plainview. The Nelsons have ten grandchildren.

V & M AWARDS

Virgil and Mary Slindee opened their business in February of 1984 at Rt. 1 Box 160, Rose Creek MN. Their business is ran from their home. Virgil also is a heavy equipment operator. Trophies and plaques are made from from the Slindee's own wood products, solid walnut, oak and cherry. They have added some plastic and marble also. The Slindees had five children and have five grand children. They formerly raised registered Quarter Horses and are still active in the Line Riders Saddle Club and Horse Shows. Virgil and Mary Slindee are active members of Six Mile Grove Lutheran Church.

SMART CAR CARE

Southern Minnesota Auto Repair Technician, is owned by Brian and Shirley Price. The Price's operated a business in Lyle from 1986 to 1988, and reopened again at their current location of 113 Elm Street in 1991. The shop is run by Brian and Shirley Price. The business started out in a small garage and has expanded to a very complete repair business with two hoists. The Price's have five children who are enrolled in the Lyle School system.

DARWIN SMALL PIONEER SEED

Darwin Small began working for Pioneer Hi-Bred International, Inc on July 1, 1982. The address of his business is 417 First Street. William Klusmeier sold Pioneer seed for thirty two years in the area that Darwin now covers. Darwin Small worked for seven years for William Klusmeier before being hired as a sales Representative. Darwin and Robbin Small purchased their current building from Agri Steel in 1984. Agri Steel had

been using the building for winter storage of grain bins. After the Smalls purchased the building an office and waiting area was built. Robbin Small assists her husband during the busiest times of the year. During the Open Houses there are always fresh baked cookies and Hot Chocolate and coffee. Robbin manages the office while Darwin tends to planting his own crops. Darwin and Robbin Small have been married for 22 years and have two children. Jill is a graduate of Lyle and is attending Riverland Tech. Daron is attending Lyle High School. Darwin Small enjoys doing business in a community in which he grew up and graduated from.

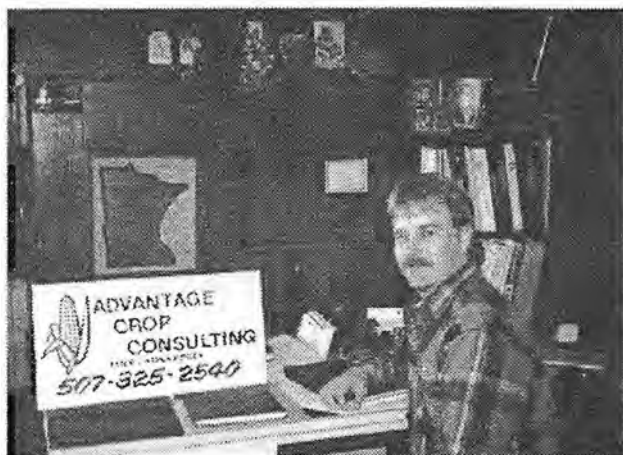


Darwin and Robbin Small, owners of Pioneer Seed Corn



ADVANTAGE CROP CONSULTING

Bryce Nelson opened up his business in January of 1984 on Main Street in Lyle. This business occupies an office in the Agri-Steel building. This is an agricultural based business and consulting service. The firm usually employees three part time employees. Bryce and Kellie Nelson have three children, Brock age 7, Adam age 6, and Sarah age 2. Kellie Nelson also does craft work at home for sale at Kountry Kinfolk.



KOUNTRY KINFOLK

Kountry Kinfolk opened up on July 3, 1993 in the Mini-Mall on Main Street in Lyle. Judy Ransom and Ramona Reuter are the original owners of this buisness. This location was used for a grocery store and a department store in the past. One of the earlier owners of this property was John Hanson

who is a great Uncle of Judy Ransom. At one time Judy's Mother, Marlys Johnson also worked at the department store. The business has changed over the years, but three generations of family have worked on this property. The business is operated by the Ransom and Reuter families. Some of the consignors also help in the shop. Kountry Kinfolk is an attractive shop featuring quality crafts, antiques, collectable, and accessories for home decorating.

Judy Ransom is a former school teacher who was born and raised in Lyle. She is an descendent of the original settlers in Lyle, the Richardson and Johnson families. She is married to Don Ransom a retired farmer and school bus driver. They have one son, Daniel, who is an accountant for the Mayo Foundation.

Ramona and Carlton Reuter are both graduates of Lyle High School and have farmed in the Lyle-Rose Creek area for the past 34 years. They have three children. Kellie is married to Bryce Nelson and have three children. Kimberly is married to Dr. Kevin Bardwell and live in Northfield, Minnesota. David is married to Lori. He is an agronomist and farmer in the Lyle area.

Judy and Ramona would like to invite everyone to stop and see them and hope they will always feel welcome at Kountry Kinfolk.

STERLING STATE BANK

On February 17, 1989 the Farmers State Bank was chartered as the Bank of Lyle. The Farmers State Bank had been formerly owned by C R. (Baldy) Hansen and his family. The new banks incorporators were Ronald F. Darga, Chairman of the Board, James F. Cunningham, President, and James R. Sparrgrove Vice-President.

On April 9, 1990 the Bank of Lyle merged with the Sterling State Bank of Austin. J.F. Mohrfeld is the current President, J.W. Nelson, Vice-President, and Earl Nelson is Chairman of the Board. The Lyle Bank operates as a branch of the Austin facility. Current Employees are Linda Ellis, Assistant Cashier, Tammy Kenyon, Teller, Merrill Meyer Insurance Agent, and Steve Gleason as Loan Officer.

The London Branch of the Sterling State Bank closed in 1994.



COPPER KETTLE RESTAURANT

Elizabeth "Bea" Anderson Taylor opened up the copper Kettle Restaurant on October 23, 1964. The building was an eyesore when the Taylors acquired the building with broken wooden blinds hanging and sagging in the many windows. The inside of the building was covered with soot and filth, and the contents being booths, a bar and one cup. Remodeling started by using the lumber in the booths to construct an island in the coffee shop. New booths, tables, and floor tile were installed. The floor tile remains to this day. The building at one time had been used as a hotel upstairs with rooms off the hall. When the Taylors acquired the building the back part of the building was torn down, a sagging apartment and a shed like entrance where replaced with the back the way it is today. The part that was torn off had a maids stairway leading to the rooms upstairs.

The next part of the process was finishing the dining room, which remains about the same today except for new windows. A stairway was added to the outside of the building leading upstairs which was next on the remodeling list. The inside was gutted and remodeled. Each subsequent owner has continued the remodeling process upstairs.

The building originally was heated by steam, a coal stoker type. The operator had to pass a government test in order to be able to operate the thing. a government test in order to be able to operate the thing. Eventually the system was replaced with a more modern and efficient heating unit.

On March 31, 1976 the Copper Kettle Restaurant was sold to Darrel and Donna Henaman. Bea had so named the business because there was always a copper kettle hanging in the window. Some of the other past owners of the Copper Kettle Restaurant were Don and Barb Olson, Al and Cheryl Plotts, Joris and Lorraine Kylo, and Duane and Nora Mattick. In December of 1993 Marie Juenger opened up the Kopper Kettle Restaurant. The restaurant remains in business today serving a full line of meals. The Kopper Kettle also provides the SEMCAC Senior Dining meals as well as the Meals on Wheels program.

Marie Juenger, her husband and family are from the St. Ansgar area.

HANSON CONSTRUCTION AND SPECIALTY CABINETS

Don and Pam Hanson opened their business in 1978. The business has grown from building additions and remodeling projects to complete new home construction. They are also able to specialize in customized cabinets and trim work. They currently employ six employees. Don and Pam Hanson have three children, Joshua, age 9, Jordan, age 6, and Jameson, age 4. Jerry Hanson manages the cabinet portion of the business.

RINALDI SIDING AND WINDOWS

Richard and Mary Rinaldi opened their business in 1991 at 302 Richard and Mary Rinaldi opened their business in 1991 at 302 Third Street in Lyle. They currently have three additional employees. Their business keeps growing each year and they have recently installed a computer system to aid in the growth. The Rinaldi's have five sons, Mario, Brandon, Logan, Dayton, and Dominic.

HOLST CONSTRUCTION COMPANY

Holst Construction Company was formed by Galen Holst in 1968 when he was asked to build a house in Austin. He and his partner Roger Skov have worked together since that time.

After graduating from high school, Galen worked for Herman Kohnke, Sr. learning his craft from the German trained master. When Galen returned from Viet Nam he again worked with Herman until he decided to retire. For a brief time Galen worked for Joesph Construction but preferred working for himself. He operates his business out of his home and workshop at 506 Fourth Street in Lyle.

In 1969 Galen formed Agri Steel which still continues under different owners. During the time he operated Agri Steel many of the young men of the Lyle community worked for him constructing grain bins.

Galen's construction business has included building numerous home, several farm building, and many remodeling jobs.

In 1972 Galen moved to his present home in Lyle, which was constructed in 1917 by Lyle's dentist, Dr. A. Lee. He has served on the Volunteer Fire Department since 1972, has been commander of the Lyle Legion Post for five different terms, and has served as County Commander for one term. He is believed to be the first Viet Nam Vet to serve as a Post Commander in the state (1969-70) and presently holds that office.

Galen and his wife Dorinda have two sons, Scott who lives

in Lyle with his wife Kim and their son Rylee, and Steven who lives in Austin.



CEDAR VALLEY F.S., INC

This farm based business originally opened up in 1976 as Tri-County on the State Line Road on the south edge of Lyle. The business specializes in farm chemicals and petroleum products. They are also able to handle livestock feed and feeding equipment. In 1982 the original buildings were destroyed in a fire. The current buildings were rebuilt shortly after that. The name has since been changed to Cedar Valley F.S., Inc. There are other offices located in Osage and New Hampton, Iowa. The business currently employs five people.



HUNTTING ELEVATOR:

Huntting Elevator is located on Highway 218. It was first opened in 1860. The first elevator was constructed in 1874 by farmers and H.C. Trowbridge conducted the business. The town became more prominent as a market place after the arrival of the railroad and an elevator to market grain.

Huntting bought the elevator in 1947. Bassett, Huntting & Company of McGregor built the first grain warehouse and their agent William Cotton became the first grain buyer.

Huntting started in McGregor, IA. They bought livestock then and went on to become a grain and feed mill. Huntting Elevator has always been family owned.

Previous managers of the elevator include Sherman, Nick Severson, George Butts, Charles Ekle, Mike Schuhmacher, and Mark Hanson, the current manager. Huntting Elevator handled coal from 1925 thru 1952. The big fire that struck Lyle on May 2, 1892 destroyed the entire block on the east side of Main Street and flames leaped across the street and destroyed the elevator as well, which was on the present site of the Huntting Elevator.

When Charles Elke was manager it was only he and one hired man that ran the operation. The company has grown from serving small family farms of 40 to 80 acres to large farms of over 1000 acres.

Present employees include Mark Hanson, Manager, Dale Svoboda, Lois Haugland, Scott Retterath, Dasil Darrow, Darcy Strouf, Ryan Retterath, and Dan Mattick.



Huntting Elevator employees: Ryan Retterath, Dan Mattick, Dale Svoboda, Scott Retterath, Mark Hanson, Darcy Strouf, and Jeff Brogdon. Missing, Dasil Darrow. Lois Haugland is the secretary.

<http://lyle.mn>

FRANK SEED SERVICE

Delos and Delores Frank opened their seed business on July 1, 1969 operated out of their home at rural Lyle. The dealership began with a franchise from Trojan Seed Corn Company. In 1972 Peterson seed Company was added with sales in soybeans, oats, and grass seed. In 1983 DeKalb Seed Company purchased the Trogan Seed Company. In 1988 Stine Seed Company was added to allow sales in an increasing number of soybean varieties. In 1991 son Ron Frank joined in the family operation and continues at this time.

Delos and Delores Frank have five sons, Vernon, Stanley, Ronald, Wayne, and Leslie, and one daughter Carol. It is not uncommon to see all the children home helping in the farming operation and seed business.

KOUNTRY KUTS

On January 6, 1989, the first business opened up in the Lyle Mini-Mall. This is a Mother-Daughter Beauty Shop called Kountry Kuts. Betty Fisher has been licensed for 26 years and has operated several shops in the area. Cindy Ziegler has been licensed for 9 years. When the business first opened it was mainly women who came in to have their hair done. As times have progressed, now there are an equal number of men who come in to get hair cuts and perms. The Beauty Shop is open all day Thursday and Friday.

Cindy and Gary Ziegler own an acreage just outside of Lyle and raise hogs and 4-H cattle. Gary is also a driver for Gopher Distributing. They have two children, Cory who is a Senior at Lyle High School, and Colleen who is a Freshman at Lyle High School.

WAYNE'S REPAIR AND TOWING

Wayne Frank opened his business in October of 1982 at 501 First Street in Lyle. The business had originally been started by Don Stanton in 1954 and continuing through 1978. Craig Farlinger had a business from 1978 through 1980, Carl and Curt Farlinger from 1980 through 1981, and Ken Hayes from 1981 through 1982. Wayne and Karen Frank purchased the business in 1982 and continue in operation today. Wayne Frank offers a full line of repair services and towing. In 1992 Wayne discontinued selling gasoline. Wayne has one employee, brother Les Frank who

has been with the business for twelve years. Wayne and Karen Frank have three children, Daniel age 12, David, age 10, and Heather, age 6. Wayne continues to be active in the Lyle First Responders and is Lyle Fire Chief.



Betty and Robert Fisher have lived in Lyle since 1984. Robert is a self-employed trucker. Robert also races late model cars during the summer months. Betty is also a Post Master relief at the Lyle Post Office and remains active on the Lyle First Responder Squad.

SEMCAC IN LYLE

Monday, Wednesday, and Friday the Senior Citizens gather at the Community Center for an 11:30 A.M. catered meal.

The first SEMCAC meal was enjoyed on Tuesday, September 21, 1987, with forty three people in attendance. The Lyle Senior Citizens bought the table to furnish to Community Center, chairs were donated by the Lyle Legion, and later two low tables and wooden chairs were donated by the Lyle Missionary Alliance Church which had recently closed. The first meals were served on Tuesday and Friday of each week. Holly Felty of Austin was the first on site manager for the SEMCAC meals. The meals were catered from the Austin SEMCAC kitchen which was prepared at the St. Olaf Lutheran Church in Austin where the Austin Senior Citizens dined at that time.

The Copper Kettle Restaurant in Lyle was opened by Joris and Lorraine Kylo. They were able to provide the meals to be served at the Community Center. The Restaurant was later sold to Duane and Nora Mattick who continued serving the SEMCAC meals. After the Matticks closed the restaurant, the meals were again delivered from the Austin SEMCAC kitchen located in the new Austin senior Center. In December of 1973 Marie Juenger purchased the Kopper Kettle Restaurant and again meals were prepared in Lyle. "Meals on Wheels" are also delivered on dining days to area residents who are unable to attend the meal. Meals are delivered by the area churches, Legion Club, Lioness Club, and senior Citizens. Once a month an evening meal is served. At various times the group of Senior citizens are entertained by school children, guest speakers, videos, and musical groups. Other times the group enjoys bingo and playing cards.

AGRI-STEEL, INC

Agri-Steel began its business at its current location in 1974. The business is owned by Duane Corson and Jeff Helle. This business site was formally occupied by Hank Matter's Barber Shop and a Pool Hall. Kal Pihelgas opened Agri-Steel in 1971 marketing grain bins. In 1978 Dennis Whalen joined Kal in the business and expanded into grain leg and Stor-Mor buildings. In 1981 Duane Corson and Jeff Helle joined Kal Pihelgas. Over the course of the years, Agri-Steel has diversified to meet the needs of the agricultural community, and has become more service orientated. Agri-Steel currently has six employees and the number usually increases during the summer and fall months. Jeff Helle is married to Kathy and they have three sons. Marty is in college at Iowa State, Mitch and Brian both attend Lyle School. Duane Corson is married to Eva and have two children, Doug in college at NIACC and Deb attends school in St. Ansgar.



Jeff Helle and Duane Corson, owners of Agri-Steele



LYLE COMMERCIAL CLUB

The Lyle Commercial Club consists of business personnel in the Lyle area. We meet the second Wednesday of every month to discuss various things we can do for our community. Throughout the year our club has funded many events such as parties for senior citizens, Easter egg hunt and Easter bunny, Fall Festival Days and citywide rummage sales, Mower County and State Fair ribbon auctions, Christmas tree sales and breakfast, Santa Claus, and Christmas lighting contest. We have placed waste recepticals throughout the city and sponsor the billboard in front of Pioneer Seed.

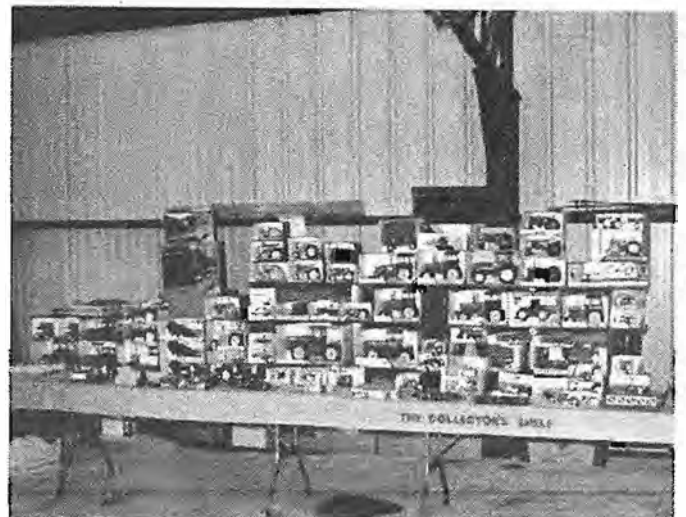
We have helped sponsor radio advertising for Lyle Tournament Athletics, City League Basketball, 4-H trips, German Exchange program, floats for the 4th of July parade, and Lyle Girl Scouts.

The club stays very active, and therefore appreciate all of our member participation. Any business is more than welcome to join.



This is a few of the Lyle Commercial Club members, Cindy Ziegler, president, Merrill Meier, Linda Ellis, Secretary, Darwin Small, Treasurer, Dale Svoboda, Sylvan Faas, and Lorimer Nelson.

Edna Kolls, former resident of Heritage House Apartments, gets a treat from the Easter Bunny.



A few of the toys displayed at the Commercial Club Toy show.

WEDDINGS UNLIMITED

Weddings Unlimited, under the ownership of Bev Frank, opened in Waltham, Minnesota in March of 1986 and moved to Lyle in November of 1987. The first site of the business was in the house built in 1896 where Dr. Cobb had his home and offices. The house was used as apartments for many years before it became the Frank home and site of Weddings Unlimited. December 15, 1989 it was destroyed by fire. The house known as the Mortenson house was purchased to become the new home for the Franks and the new place for the business.



Beverly Frank's Bridal Shop, basement of old "Mortenson" home, Gingerbread trim, renovated by them, for business and home use.

The business began primarily sewing custom made brides and bridesmaids dresses and renting tuxedos. As the business grew Bev joined with her sister Kathy Halverson. In November 1993 they opened a second location in Owatonna. While custom sewing is still a large part of the business, they have also order dresses from a large number of companies and offer tuxedos, invitations, jewelry, shoes and accessories. The business employs Denice Mudra at the Lyle location. She has been with them for one year. At the Owatonna location there are two employees and part time college students.

Bev's husband, Ronald is a Lyle native and they have four children, Tina, Stacy, Kari, and Patrick. Bev's partner, Kathy Halverson, is married to a native of Lyle, Steve Halverson. They have two children, Jeremy and Jessica.

LYLE LIONS CLUB

The Lyle Lions Club remains a very vital part of the Lyle Community. They have sponsored many fund raising events for local needs. Pictured below are 1-r Don Badger, district Lions Club manager, Louis Taylor, Gary Nelson, Paul Trelstad, Deverne Johnson, and Kenneth Meyer. 2-r Shirll Nelson, Delos Frank, Charles Ekle, Richard Murphy, and Harold Rohne.



LYLE RURAL MAIL DELIVERY

Loren Denisen has worked for the Lyle Post office since 1981. Loren served as the substitute driver from 1981 to 1988 for Nate Nemitz and Ed Fenkava. In 1988 Loren was appointed to the full time position. The Lyle rural route consists of 106 miles per day, six days a week. Darrel Kraft is the current Lyle substitute driver. It is still common to see bees, baby chicks, and trees being delivered through the U.S. mail. Loren Denisen and his wife Lola live in Lyle and have three adult children.

JOHN CARTER

Lyle's First Rural Mail Delivery



The Post Office was once located in the building located next to the bank on Main Street. In Sept. 1965 it was moved to its present location on Grove Street.

The Lyle Post Office was started at Minnereka April 25, 1870 with William Schellback as postmaster. January 19, 1871, the name was changed to Lyle and Thowald Irgens became postmaster.

Succeeding postmasters and dates of their appointments were as follows: Patrick J. Collins, Nov. 20, 1886; Olaus G. Myhre, March 22, 1889; William Stanley, June 6, 1892; Frank B. Losey, Sept 22, 1894; George Robertson, Dec. 10, 1895; his son, Burton J. Robertson, Jan. 3, 1903; Harvey Hildebrand, May 22, 1913; Charley P. Fossey, June 17, 1930; Nels E. Fedson, Aug. 6, 1935; Jay P. Mortenson, Sept. 7, 1944; Orville J. Mortenson, Oct. 15, 1950; Darnell W. Matter, Nov. 15, 1953; Orville J. Mortenson, Dec 8, 1961; Laurence L. Murphy, Aug. 3, 1962; Violet L. Howard, Sept. 11, 1964; and Dorothy DeBoer, January 5, 1980. Dorothy DeBoer continues to be the present postmistress. Betty Fisher is the current post master relief.



COLONIAL MANOR

This housing complex was completed in 1974 as a subsidized housing unit. Some funds that were left over from the 1970 centennial celebration were applied towards this unit. There is 1 one bedroom apartment and 7 two bedroom apartments. There is a laundry room and storage lockers available. All units are handicapped accessible. These units are available to low income families and to senior citizens.



HERITAGE HOUSE

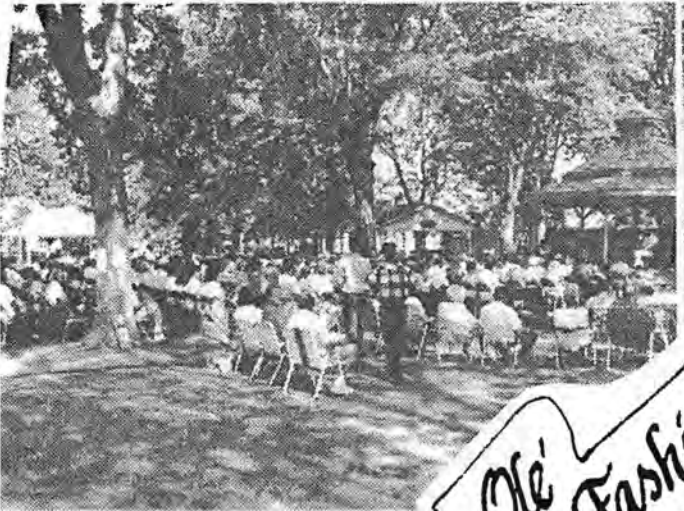
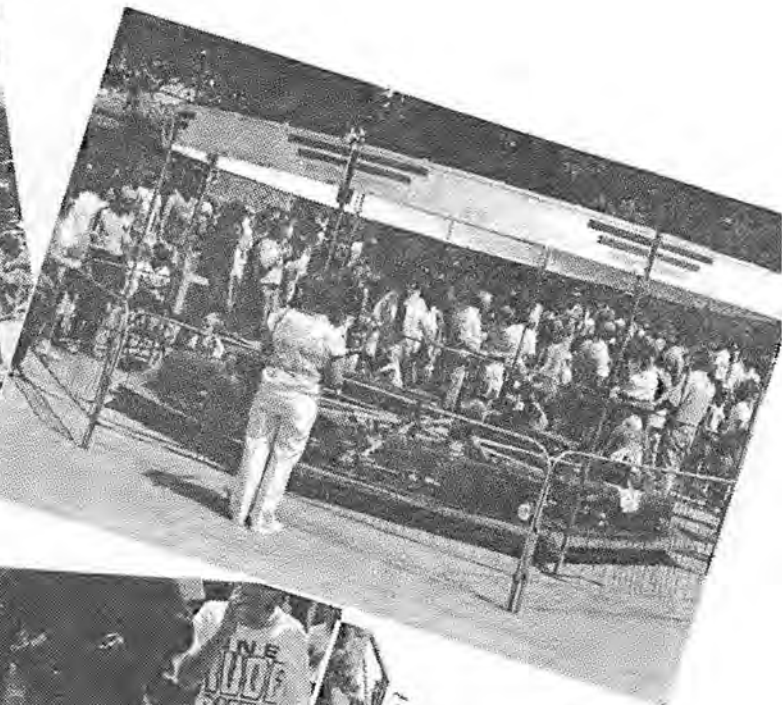
Heritage House was completed in September of 1978. This is an elderly housing unit consisting of 14 apartments, 13 one bedroom units, one two bedroom unit. There is a laundry room and community room. The facility is handicapped accessible. This housing complex is for senior citizens.

LYLE TOWNHOMES

Construction was completed early in 1995 on these four homes. There are two townhomes, each consisting of two units. All units are two bedrooms, and one of the units also has two baths. At this time, the units are for sale.



Charles Ekle from the Mower County Housing Board gives Dennis Klinipier a plaque for honorary service to the Housing Board in January, 1992. Dennis Klinipier is a long time Lyle businessman, former Lyle Lumber yard manager and Lyle Bank manager.



Ole' Fashioned 4th of July



LYLE, MINNESOTA
sung to the tune "Oleanna"

words by Rachel Hudson, 1995

CHORUS:

Lyle, Minnesota-Lyle, Minnesota
North or South or East or West
Ya sure, Lyle is the best

We are from Lyle, Minnesota
and we are glad to be
Singing all its praises and
telling wha there is to see.

chorus

There are many things in Lyle
that

we would like you to see,
at our red caboose you can
pick up all our history.

chorus

Strolling down our Walk of
Pride and

Reading the names you'll find
May bring lot of mem'ries or
Questions running through your
mind.

chorus

You can have your name there,
too, its
not very hard at all:
Just decide what you want and
order it at City Hall.

chorus

We have places you can shop
and
places where you can eat;
If you try them all, you'll
know that
Lyle Merchants can't be beat.

chorus

For one hundred twenty five
years

Lyle has been going great!
So we all will take time to
Do some things to celebrate.

chorus

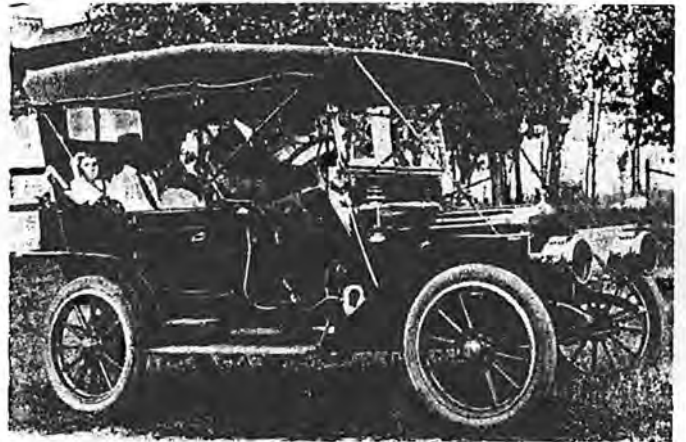
Many, many years ago, per-
haps on this very day,
people were decid-ing that
this was where they's like to
stay.

chorus

We're just glad our founding
fathers
stopped where they did that
day,

or we would be singing a-
bout life in Lyle, I-O-Way!

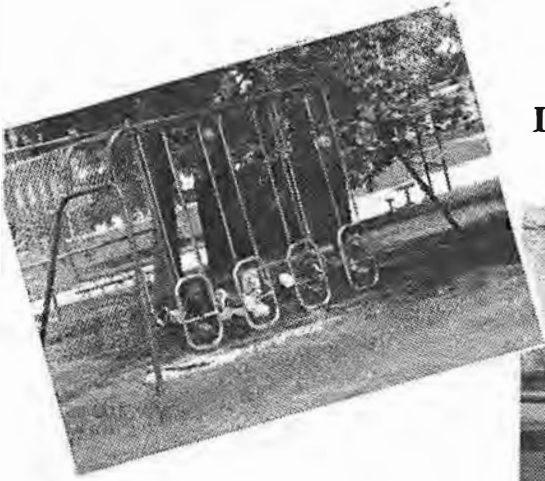
chorus



SMALL - BUT STANDING TALL...

LYLE may be small, but it stands tall
as an entrance to the land where the
mighty Mississippi begins, colored by
rich golds of grains, blues of waters
(10,000 lakes), and verdant greens of
life magnified in the wonderful state
of MINNESOTA.

In case you hadn't noticed...



All things change with time.



LYLE WALK OF PRIDE



LYLE VOLUNTEER FIRE DEPARTMENT

The Lyle Volunteer Fire Department has twenty active members. They are dispatched by means of a pages system that has been installed or by use of a phone bar system. All emergencies calls should be placed through the County Wide 911 system. The current fire chief is Wayne Frank. Assistant Fire Chief is Todd Cooling, Secretary Denny Helgeson, Treasurer Steve Price, and Deputy Chief Neal Kenyon. The other members of the department are Reuben Murphy, Gary Hanson, Darwin Small, Wayne DeBoer, Darcy Strouf, Dean Baldner, Mark Hanson, Brad Nelson, Rick Jacobson, Tim Vogel, Galen Holst, Dale Svoboda, and Harold Rohne.

The Lyle Rural Fire Association consists of members of the City of Lyle, Lyle Township, Nevada Township, and Otranto Township.

Jane Attlesey and Nancy Williamson pose with the entrance to the Lyle Walk of Pride. Jane Attlesey is the former director of the Lyle Economic Development Authority.

Nancy Williamson is the former Lyle City Clerk. Nancy Williamson held the position of Grant Administrator and grant writer for the City of Lyle. She was very instrumental in developing many of the changes that the City of Lyle has undertaken from 1983 through 1993. Nancy Williamson when not pursuing her goals as City Clerk and Grant Administrator was also an accomplished author, and taught art classes out of her home.

Nancy Williamson and Leone Ackerland left the Lyle area in June of 1993 and have relocated near Seattle, Washington.



Bought of **L. W. SHERMAN,**

DEALER IN

LUMBER AND COAL.

O. A. MYHRE,
MINN

Our Special \$2.00 Value in An
All Wool Union
Suit, New for Fall
and Winter.



Remember When

LYLE FURNITURE MART

"HOME OF QUALITY"

JERRY JORDAHL AND PAT RYAN, Proprietors

Telephone EA 5-4446

In acct with

R. RIERSON,

Hardware, Farming Implements,

Carriages, Buggies, Wagons, Binding Twine, Rives, Etc.

TEACHER'S REPORT TO PARENTS,

THE LYLE STATE HIGH SCHOOL

INDUSTRIAL DEPARTMENT

**Gamble Store clubrooms
at Lyle destroyed by fire**

Troy City Creamery Co.

Lyle Township, Mower County, Minn.

Shares, \$25.00 Each.

<http://lyle.mn>

